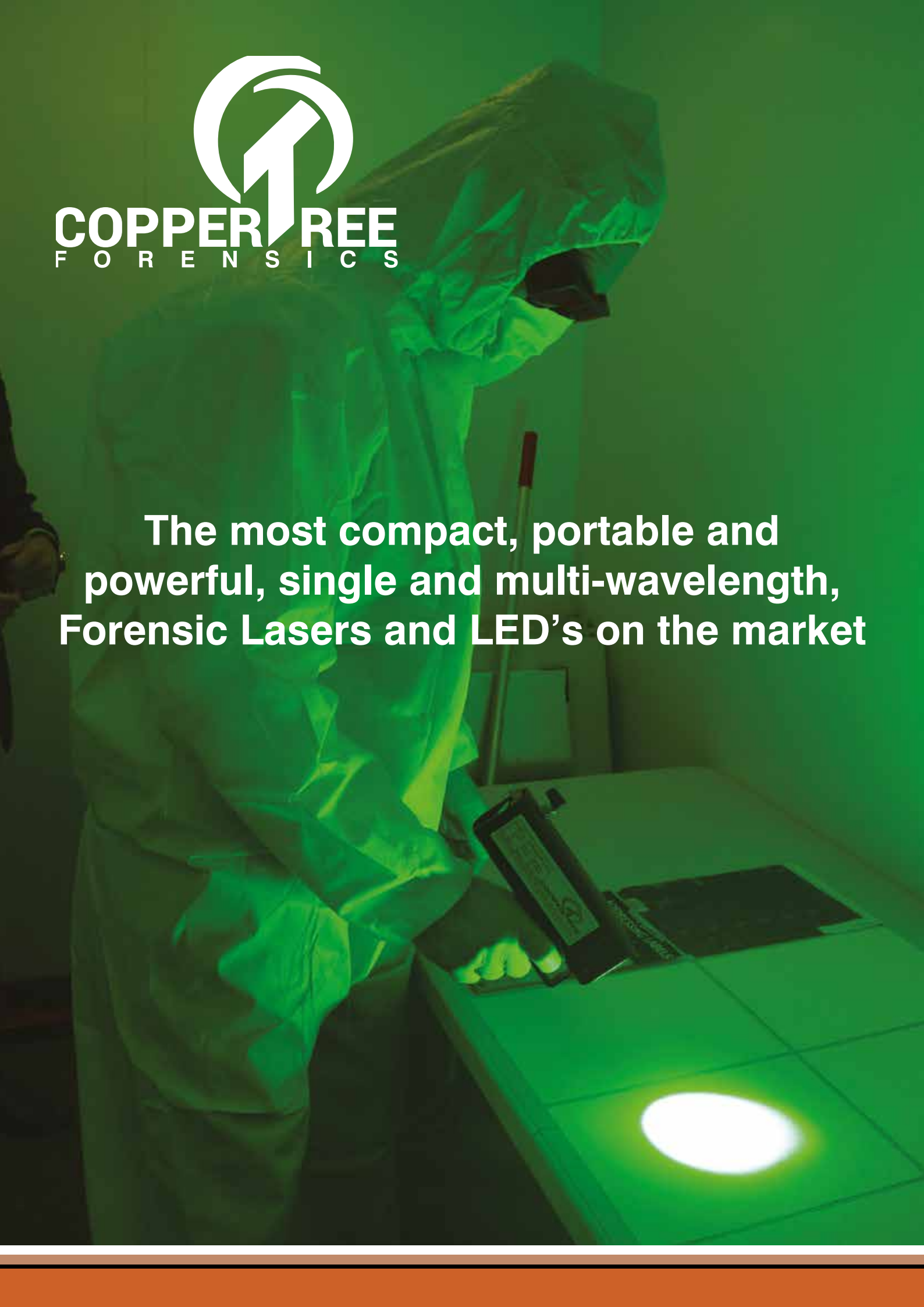




**COPPER TREE**  
FORENSICS

**The most compact, portable and powerful, single and multi-wavelength, Forensic Lasers and LED's on the market**



A choice of either a 445nm or 520nm wavelength, in this small portable forensic laser

Powerful laser output:  
10W @ 445nm  
4W @ 520nm



- Weighing only 0.9kg
- Measuring just 10.4" x 2" x 4"
- Internal rechargeable Li-ion battery means cordless operation, or use while charging
- 445nm - 12.6v/10.5Ah lithium battery
- 520nm - 16.8v/7.8Ah lithium battery
- Battery life of up to 4 hours of continuous use
- Supply voltage of 110v - 240v
- Deadman's finger and remote interlock

## THIS LIGHTWEIGHT AND COMPACT LASER GETS INTO SMALL AREAS

All lasers come with carry case, two pairs of appropriate goggles, camera filters and charger

A high end Laser with great results at every crime scene. With a wavelength of 532nm @ 8W, this laser ticks the boxes within the high powered, portable range



- High specification lens to optimise exceptional transmission of specified wavelength
- Powerful laser output of;  
8W @ 532nm
- Weighing only 7.3kg
- Measuring 12.5" x 5" x 6.5"
- Internal rechargeable Li-ion battery means cordless operation, or use while charging
- A battery capacity of 25.2v/15.6Ah
- Battery life of up to 4 hours of continuous use
- Supply voltage of 110v - 240v
- Deadman's finger and remote interlock



## A HIGH END LASER WITH GREAT RESULTS IN THE LAB OR AT A CRIME SCENE

All lasers come with carry case, two pairs of appropriate goggles, camera filters and charger



A choice of wavelengths from 532nm, 445nm and 405nm, to create your own bespoke switchable dual wavelength laser



- Powerful laser output:
  - 445nm @ 12W + 532nm @ 4W
  - 405nm @ 3W + 532nm @ 4W
  - 405nm @ 6W + 532nm @ 4W
- Weighing only 2.2kg
- Measuring only 10.8" x 2" x 4.9"
- Internal rechargeable Li-ion battery means cordless operation, or use while charging
- A battery capacity of 16.8v/7.8Ah
- Battery life of up to 3 hours of continuous use
- Supply voltage of 110v - 240v
- Deadman's finger and remote interlock



## THIS LIGHTWEIGHT AND COMPACT LASER GETS INTO SMALL AREAS

All lasers come with carry case, two pairs each of appropriate goggles, camera filters and charger

Switchable, dual 445nm and 520nm laser,  
not much larger than a smartphone!



- High specification lens to maximise the see through clarity
- Powerful laser output:
  - 6W @ 445nm and 2W @ 520nm
- Weighing only 0.72kg
- Measuring only 7.2" x 2.2" x 2.5"
- Internal rechargeable Li-ion battery means cordless operation, or use while charging
- A battery capacity of 16.8v/7.8Ah
- Battery life of up to 90 minutes of continuous use
- Supply voltage of 110v - 240v
- Deadman's finger and remote interlock

## OUR SMALLEST FORENSIC LIGHTWEIGHT LASER YET!

All lasers come with carry case, two pairs each of appropriate goggles, camera filters and charger

A switchable dual wavelength of 445nm and 520nm. This ergonomic design includes a handle for ease of use, allowing for the addition of extra battery packs, thereby extending its usable life at crime scenes.



- High specification lens to optimise exceptional transmission of specified wavelengths
- Powerful laser output:
  - 6W @ 445nm and 2W @ 520nm OR
  - 10W @ 445nm and 3W @ 520nm
- Weighing only 0.72kg
- Measuring only 7.2" x 2.2" x 2.5"
- Internal rechargeable Li-ion battery means cordless operation, or use while charging
- A battery capacity of 16.8v/7.8Ah
- Battery life of up to 90 minutes of continuous use
- Supply voltage of 110v - 240v
- Deadman's finger and remote interlock



## OUR MOST POPULAR FORENSIC LIGHTWEIGHT LASER, COMPLETE WITH EXTRA BATTERY PACK

All lasers come with carry case, two pairs each of appropriate goggles, camera filters and charger



Guaranteed power, portability and results at every crime scene. Switchable wavelength laser, operating at 445nm and 532nm, supported by up to 12W of power.



- High specification lens to optimise exceptional transmission of specified wavelengths
- Powerful laser output:  
12W @ 445nm and 8W @ 532nm
- Weighing only 7.3KG
- Measuring 12.5" x 5" x 6.5"
- Internal rechargeable Li-ion battery means cordless operation, or use while charging
- A battery capacity of 25.2v/15.6Ah
- Battery life of up to 4 hours of continuous use
- Supply voltage of 110v - 240v
- Deadman's finger and remote interlock

## GUARANTEED POWER, PORTABILITY AND RESULTS

All lasers come with carry case, two pairs each of appropriate goggles, camera filters and charger

A switchable, triple wavelength laser.

With three wavelengths of 405nm, 445nm and 532nm



- High specification lens to optimise exceptional transmission of specified wavelengths
- Powerful laser output:
  - 3W @ 405nm
  - 12W @ 445nm
  - 4W @ 532nm
- Weighing only 2.2kg
- Measuring only 10.8" x 2" x 5"
- Internal rechargeable Li-ion battery means cordless operation, or use while charging
- 16.8v/7.8Ah Li-ion battery
- Battery life of up to 3 hours of continuous use
- Supply voltage of 110v - 240v
- Deadman's finger and remote interlock



## THE MOST COMPACT AND POWERFUL TRIPLE WAVELENGTH LASER ON THE MARKET

All lasers come with carry case, two pairs each of appropriate goggles, camera filters and charger



## DVI-LED

## Dual Wavelength LED light

Utilising the most powerful LED technology.  
Provides switchable 445nm and 530nm wavelengths.

- 60 high-intensity LEDs giving narrow spectrum output
- Dual switchable wavelength ranges of;
  - 445nm up to 33W
  - 530nm up to 12W
- Weight: from 4.5kg
- Main unit with internal rechargeable 25.2v/15.6Ah Li-ion battery
- Battery life of up to 150 minutes on continuous use
- Supply voltage of 110v - 240v
- Deadman's finger control



## FIT-LED

## Forensic Investigation Torches

Green, Blue and White Forensic LED lights with wavelengths of 450nm and 520nm

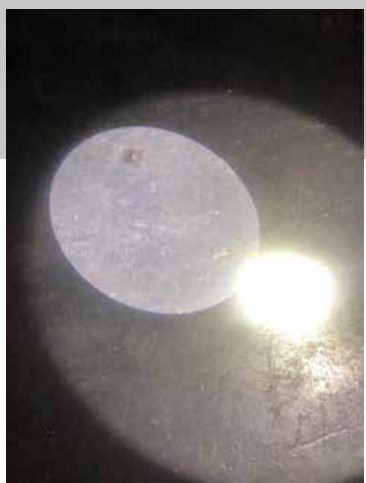
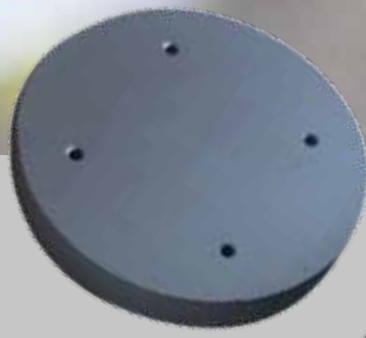
- Single Wavelength peak of;
  - Blue - up to 4W @ 450nm
  - Green - up to 1.2W @ 520nm
  - White - up to 1.3W @ 445nm
- Rechargeable battery, 16.8v/2.6Ah Li-ion, with a battery life of up to 90 minutes of continuous use
- Supply voltage of 110v - 240v



The CSI 'must have' light light source, has x2 power settings to meet the demands of every crime scene scenario.



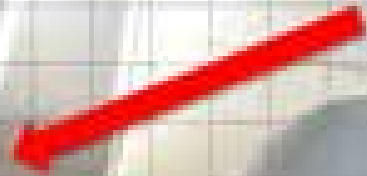
This personal issue white light torch, forms part of the Forensics Investigation Torch range. It is small in size and stature, but big in power and clarity.





# CIFI Torch

For use in any location from Healthcare to Facilities Management, Education or Factories. Locating bacteria, organic matter and biological traces not visible to the naked eye and able to locate problematic traces, even in ambient light conditions.



- Single Wavelength peak of:  
Blue - up to 2W @ 450nm
- Rechargeable battery, 16.8v / 2.6Ah Li-on with a battery life of up to 90 minutes continuous use
- Supply Voltage 110v - 240v
- Weight: 1070Kg
- Length: 26.8mm





A long range powerful LED search torch, for use at Disaster Recovery, Traffic Incidents, Search and Rescue. With a search beam of up to 1KM



- 1100 Lumens
- Robust LED lamp
- Length: 26.5cm
- Head diameter: 6.7cm
- Battery: 5500mAh / 3.7v / 20.35Wh
- Tested to standard: BS EN 13032-4:2015



This quick and easy charging torch, comes complete with charger, rechargeable batteries and protective lens cap.



Our Forensic Light Sources come with a two year warranty against manufacturers defects

Training in the safe use of our Lasers and Forensic Light Sources is an optional extra that we can provide and do recommend

See more information on the CopperTree Forensics website at [www.coppertreeforensics.co.uk](http://www.coppertreeforensics.co.uk)

See videos [here](#)

eBrochure download [here](#)

CopperTree Forensics Ltd  
Dorset House  
Regent Park  
Kingston Road  
Leatherhead  
Surrey  
KT22 7PL

Telephone :0203 370 2680  
[CTF@coppertreeforensics.co.uk](mailto:CTF@coppertreeforensics.co.uk)

